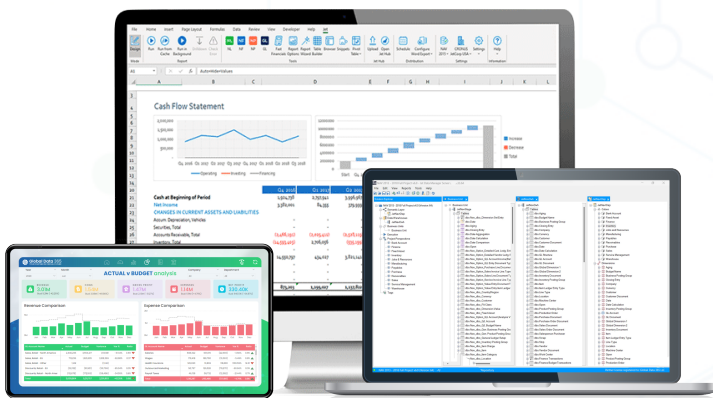




# Jet Analytics Training

Jet Analytics training can provide you with the knowledge and skills needed to effectively leverage the Jet Analytics platform for data analysis and reporting. With this training, you can improve their ability to extract insights from complex data sets, build interactive reports and dashboards, and automate repetitive tasks, ultimately leading to increased productivity.



## Reporting from Analytics

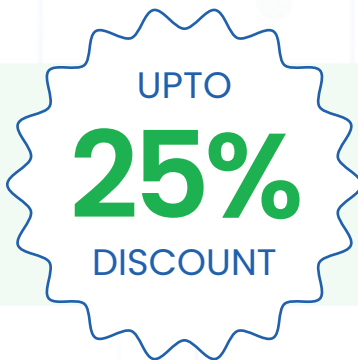
Leverage Your Jet Analytics Investment



**Program Level:** Basics & Advanced

**Tools to be covered:**

Jet Reports Excel Add-in Jet Data Manager Power BI



**REGISTER NOW**

Email: [sales@globaldata365.com](mailto:sales@globaldata365.com)  
Website: [www.globaldata365.com](http://www.globaldata365.com)

### Who should take this course:



This course is crafted for individuals holding the Jet designer license, aiming to create reports with the Jet Excel Add-in. It's also suitable for IT professionals overseeing data warehouse and cubes management. Primarily, Finance and IT team members would benefit most from this course.

### Learning Objectives:



**Upon successfully finishing the course, you will have covered:**

- Designing custom reports with the Jet Reports Excel Add-in.
- Employing Jet Functions for both basic and complex reporting.
- Distributing reports through Jet Hub.
- Modifying the existing data warehouse and OLAP cubes with Jet Data Manager.
- Crafting new cubes from the ground up using Jet Data Manager.
- Creating customized dashboards on Power BI using Jet Analytics

### Course Details

#### Duration

- Eight sessions, each lasting 3 hours
- (four sessions focused on Jet Reports, three sessions on Jet Data Manager and one session on Power BI).*

#### Materials Provided

- Jet Reports user manual
- Jet Data Manager user manual
- Practice Exercises
- Video Recordings

# Course Curriculum

| DAY   | TOPIC   | OUTLINES   |
|-------|---|--|
| Day 1 | <b>Introduction to Jet Reports</b>            | <ul style="list-style-type: none"> <li>✓ Introduction to Jet Reports</li> <li>✓ Jet Reports Ribbon Guide</li> <li>✓ Types of Users Data</li> <li>✓ Source Settings</li> <li>✓ Detail Lists</li> <li>✓ Jet Functions Overview (NL, NF, NP)</li> <li>✓ Summary Lists</li> </ul>  |
| Day 2 | <b>Basic Tools &amp; Techniques</b>           | <ul style="list-style-type: none"> <li>✓ Report Options</li> <li>✓ Grouping Reports</li> <li>✓ Table Builder</li> <li>✓ Adding Subtotals and Grand Total</li> <li>✓ Fast Financials</li> <li>✓ NL(Column) &amp; NL(Sheet)</li> <li>✓ Browser</li> <li>✓ Report Wizard</li> </ul>   |
| Day 3 | <b>Advanced Reporting</b>                     | <ul style="list-style-type: none"> <li>✓ Financial Statements (With NL &amp; GL)</li> <li>✓ Advanced Filtering</li> <li>✓ Date Intelligence (Comparing Actual vs LY)</li> <li>✓ Graphs</li> <li>✓ Multiple Company Consolidation</li> <li>✓ Array Calculation</li> <li>✓ Multiple Databases Consolidation</li> </ul>   |
| Day 4 | <b>Sharing &amp; Collaboration</b>            | <ul style="list-style-type: none"> <li>✓ Conditional Hiding</li> <li>✓ +Lock, +Hidesheet</li> <li>✓ Jet Hub</li> <li>✓ Jet Scheduler</li> <li>✓ Word Based Reports</li> </ul>  |
| Day 5 | <b>Fundamentals of ETL Process</b>            | <ul style="list-style-type: none"> <li>✓ Understanding the concept of Business Intelligence and ETL</li> <li>✓ Understanding Data Warehouse and Cubes</li> <li>✓ Creating Jet Repository database</li> <li>✓ How to create Staging, Data Warehouse and Cubes databases</li> <li>✓ Connecting the JDM project with NAV database</li> <li>✓ Bringing tables and fields to the JDM project</li> </ul> |
| Day 6 | <b>Building Data Warehouse</b>                | <ul style="list-style-type: none"> <li>✓ Applying Transformations and Data Selection Rules</li> <li>✓ Creating Lookup Fields and making table joins</li> <li>✓ Creating a Data Warehouse from Staging database</li> <li>✓ Combining multiple tables into one table</li> <li>✓ Renaming the tables and fields in Data Warehouse</li> <li>✓ Finishing up the Data Warehouse</li> </ul>               |
| Day 7 | <b>Building OLAP Cube</b>                     | <ul style="list-style-type: none"> <li>✓ Creating the Sales Cube</li> <li>✓ Adding Dimensions</li> <li>✓ Adding Calculated Measures and Business Functions</li> <li>✓ Adding Shortcut NAV dimensions</li> <li>✓ OLAP Security</li> <li>✓ Execution Packages and Scheduling</li> <li>✓ Full Load vs Incremental Load</li> </ul>   |
| Day 8 | <b>How to use Power BI with Jet Analytics</b> | <ul style="list-style-type: none"> <li>✓ Overview of Power BI Desktop</li> <li>✓ Defining Measures and Dimensions</li> <li>✓ Connecting Power BI with Jet Analytics Cube</li> <li>✓ Designing a Sample Sales Dashboard</li> <li>✓ Adding Custom Theme and Logo to Dashboard</li> <li>✓ Publishing the Dashboard on Power BI Web</li> <li>✓ Sharing Dashboard with Other Users</li> </ul>           |