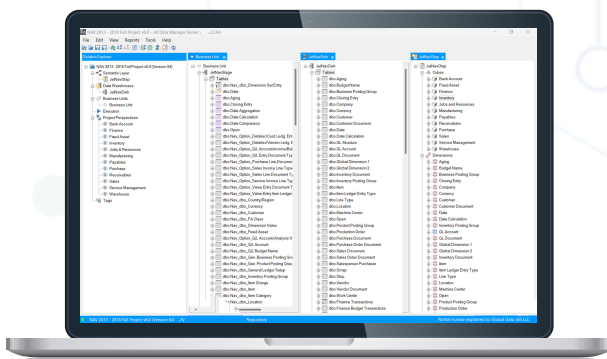




Jet Data Manager – Beginner Training

The Jet Data Manager Beginner Training course introduces the essentials of ETL processes, data warehousing, and OLAP cubes. Learn to create and manage Jet Repository databases, transform data, and build business intelligence solutions. Elevate your data management skills with this comprehensive training.



Supercharge Your ETL Skills!

Jet Data Manager Training Awaits!



Program Level: Beginner

Key Features:

Interactive Live Sessions

Expert Certification

Comprehensive Post-Training Support

1:1 training



[REGISTER NOW](#)

Email: sales@globaldata365.com

Website: www.globaldata365.com

Who should take this course:



This course is ideal for business analysts, data professionals, and IT specialists who are new to Jet Data Manager. It's also suited for anyone looking to enhance their skills in data warehousing and business intelligence. Additionally, those responsible for data integration and reporting in their organizations will benefit greatly.

Learning Objectives:



Upon successfully finishing the course, you will have covered:

- Understand the fundamentals of ETL processes and data warehousing.
- Create and manage Jet Repository databases.
- Apply data transformations and selection rules.
- Build and finalize data warehouses from staging databases.
- Develop OLAP cubes with dimensions, calculated measures, and business functions.
- Schedule and execute data management tasks efficiently.

Course Details

Duration

- ✓ 9 Hours
- ✓ 3 Days – 3 Hours Each Session

Materials Provided

- ✓ Jet Data Manager Training Videos
- ✓ Jet Data Manager User Guide
- ✓ Jet Data Manager Training Certification



Course Curriculum

SESSIONS	OUTLINES
<p>Session 01</p>	<p>Fundamentals of ETL Process</p> <ul style="list-style-type: none"> ✓ Understanding the concept of Business Intelligence and ETL ✓ Understanding Data Warehouse and Cubes ✓ Creating Jet Repository database ✓ How to create staging, Data Warehouse and Cubes databases ✓ Connecting the JDM project with NAV database ✓ Bringing tables and fields to the JDM project
<p>Session 02</p>	<p>Building Data Warehouse</p> <ul style="list-style-type: none"> ✓ Applying Transformations and Data Selection Rules ✓ Creating Lookup fields and making table joins ✓ Creating a data warehouse from staging database ✓ Renaming the tables and fields in Data Warehouse ✓ Finishing up the data warehouse
<p>Session 03</p>	<p>Building OLAP Cubes</p> <ul style="list-style-type: none"> ✓ Creating the Sales Cube ✓ Adding Dimensions ✓ Adding Calculated Measures and Business Functions ✓ Adding Shortcut NAV dimensions ✓ Execution Packages and Scheduling